

Design Ghidini Pier Luigi

Modello depositato
Patent pending



Maniglia con placca
Door handle with plate



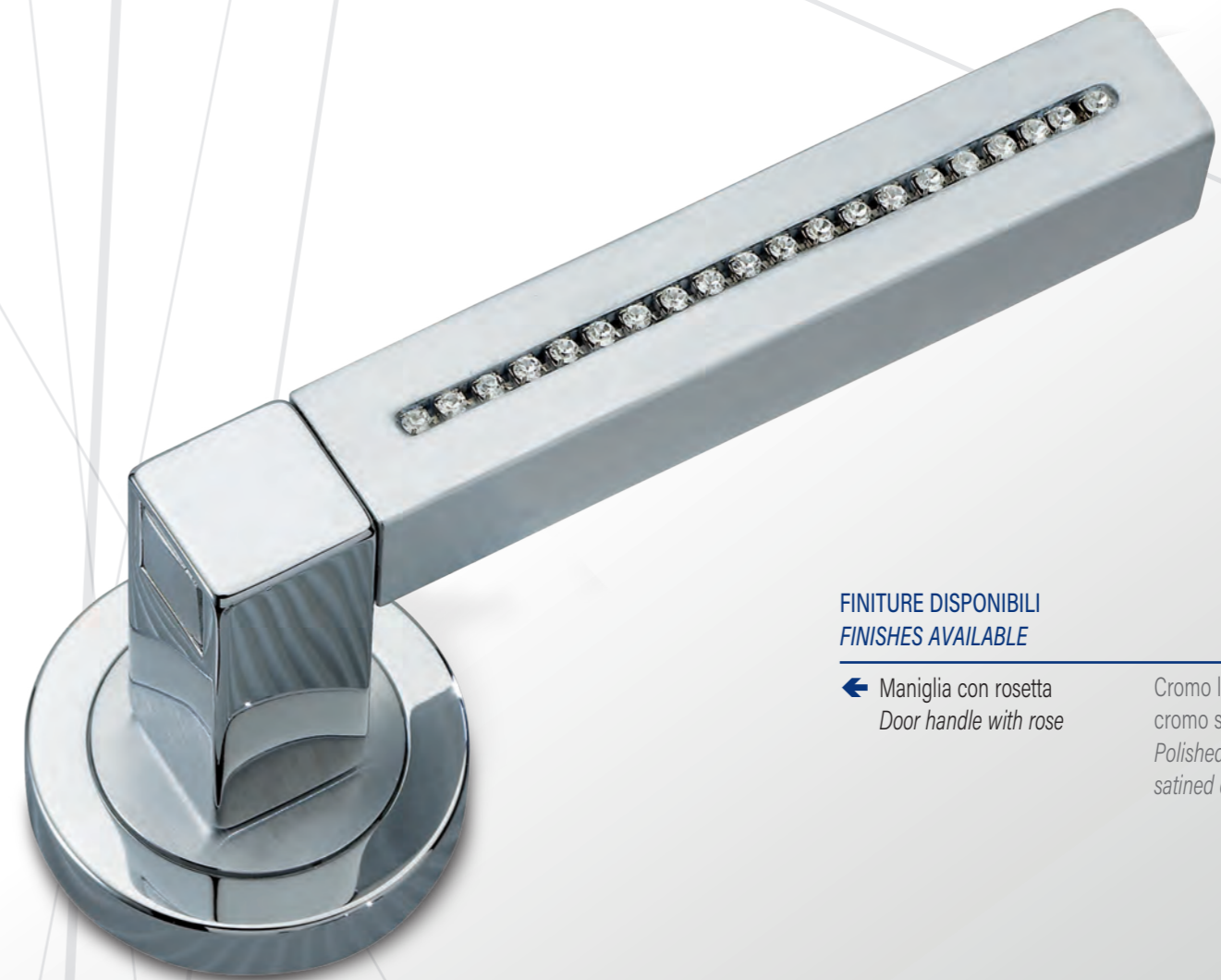
Maniglia per finestra DK
Window handle DK



Cremonese EZ
Window handle EZ

SERIE PITAGORA SWAROVSKI

LINEA
MODERNA




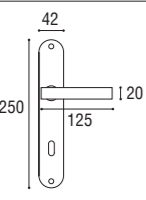
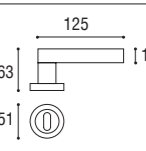
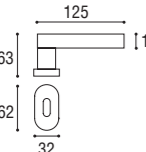
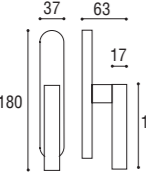
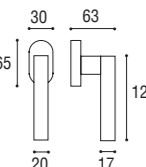
FINITURE DISPONIBILI
FINISHES AVAILABLE

← Maniglia con rosetta
Door handle with rose

Cromo lucido +
cromo satinato
Polished chrome +
satined chrome

Materiale: Zircal
Material: Zircal


Cromo lucido +
cromo satinato
Polished chrome +
satined chrome

| | | |
|---|---|-----------------------------|
|  | Maniglia con placca \varnothing 8 x 90 Door handle with plate \varnothing 8 x 90 | Cod. 98 CC 01 SW € 84,20 |
| | Maniglia con placca \varnothing 8 x 85 yale Door handle with plate \varnothing 8 x 85 yale | Cod. 98 CC 03 SW € 84,20 |
| | Maniglia con placca \varnothing 8 x 70 Door handle with plate \varnothing 8 x 70 | Cod. 98 CC 02 SW € 84,20 |
|  | Maniglia con rosetta e bocchetta Door handle with rosette and key hole | Cod. 98 CC 16 SW € 84,20 |
| | Maniglia con rosetta e bocchetta yale Door handle with rosette and key hole yale | Cod. 98 CC 17 SW € 84,20 |
|  | Maniglia con rosetta e bocchetta ovale Door handle with oval rosette and key hole | Cod. 98 CC 19 SW € 84,20 |
| | Maniglia con rosetta e bocchetta yale ovale Door handle with oval rosette and key hole yale | Cod. 98 CC 20 SW € 84,20 |
|  | Cremonese EZ con impugnatura maniglia Window handle EZ | Cod. 98 CC 59 SW € 47,70 |
| | Cremonese EZ+7 con impugnatura maniglia Window handle EZ+7 | Cod. 98 CC 60 SW € 47,70 |
| | Martellina \varnothing 7 con impugnatura maniglia Window handle \varnothing 7 | Cod. 98 CC 58 SW € 47,70 |
|  | Maniglia per finestra DK \varnothing 7 x 40 Window handle DK \varnothing 7 x 40 | Cod. 98 CC 35 SW € 47,70 |

Su richiesta disponibile anche con: • Placca rettangolare • Rosetta quadrata • Rosetta rettangolare
Available on request with: • Rectangular plate • Square rose • Rectangular rose